



18 Beacon Drive Schofields NSW

4 2 2

This spacious double story family home which set on a 364sqm parcel of land. The home offers the perfect blend of indoor and outdoor entertaining areas, upon entry to the home an extra large open plan living with a dining area that opens to the beautifully landscaped backyard and alfresco through sliding doors.

Just a short drive from a range of schools, Metro Station, local shops and shopping centre. These include Schofields Public School, Tallawong Metro Station, Schofields Train Station, Rouse Hill Shopping Centre, Schofields Town Village with Coles and Woolworths and more.

Features & Fittings

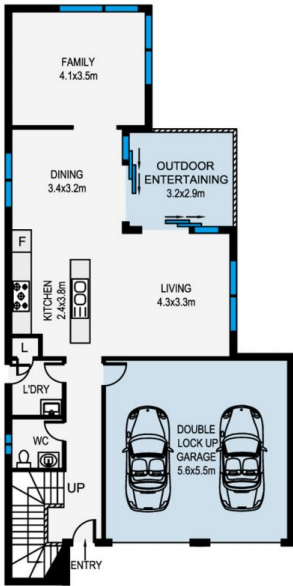
- Land size 364 sqm
- Downstairs separate and additional living areas, perfect for working from home

Price : \$ 1,300,000
Building Size : 196 sqm
Land Size : 364 sqm
View : <https://www.jami.com.au/sale/nsw/western-sydney/schofields/residential/house/8041612>

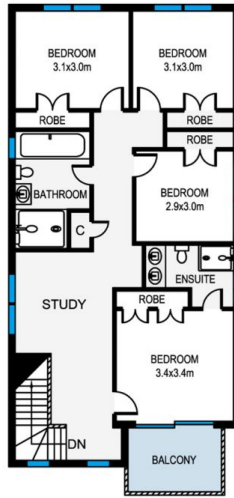


Jimmy Pan
0415 535 235

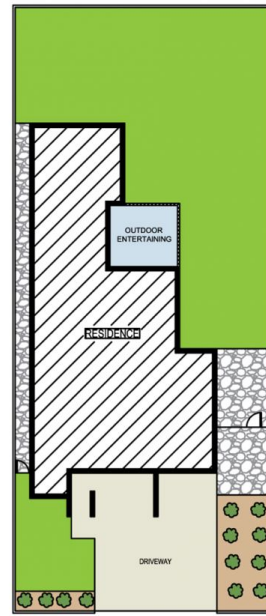
Jane Lin
0434 350 542



GROUND FLOOR



UPPER FLOOR



SITE PLAN (NOT TO SCALE)



MEASUREMENTS ARE APPROXIMATE. NOT TO SCALE. ILLUSTRATIVE PURPOSES ONLY. WE DO NOT TAKE ANY RESPONSIBILITY FOR ANY INFORMATION SUPPLIED.

18 Beacon Drive, Schofields

4 2 2

JAMI REAL ESTATE