

G87/37 Rothschild Avenue ROSEBERY NSW

4 3 2

Presented by Meriton, an award-winning developer renowned for quality and design, Our Modern Spacious townhouse provides an unparalleled experience of luxurious and roomy living. Ideally situated just steps away from Green Square's Gunyama Park and Aquatic Centre, and nestled within the trendy hub of Rosebery, this residence is conveniently located only 4km from Sydney's CBD.

Large townhouse with the convenience of an onsite Woolworths supermarket and other retail options, professionally managed by dedicated onsite building staff. Residents can enjoy a fully equipped gym, an indoor aquatic center featuring a heated pool, spa, and sauna, as well as beautifully landscaped podium gardens and

Type	: Townhouse
Price	: For Sale \$2,000,000 to \$2,200,000
Building Size	: 19 sqm
Land Size	: 202 sqm
View	: https://www.jami.com.au/sale/nsw/eastern-suburbs/rosebery/residential/townhouse/8085335

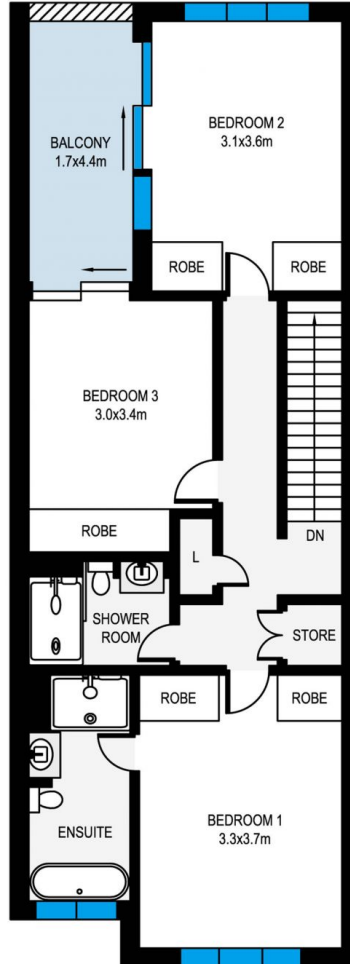
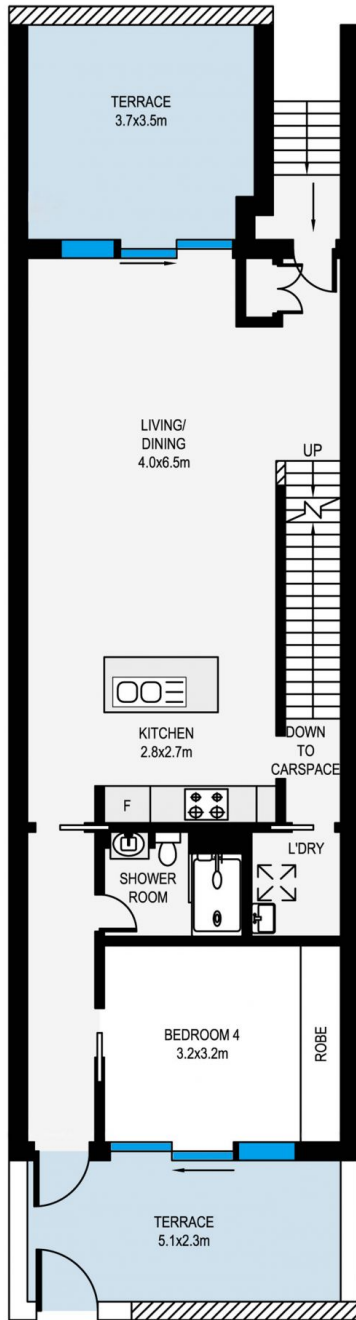
[For full version visit the website](https://www.jami.com.au)



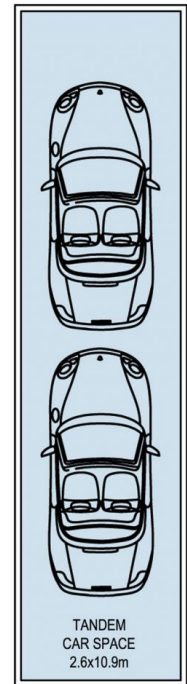
Jane Lin
0424 250 542



Gimmy Pan
0415 525 225



STORAGE CAGE
1.9x1.0m



MEASUREMENTS ARE APPROXIMATE. NOT TO SCALE. ILLUSTRATIVE PURPOSES ONLY. WE DO NOT TAKE ANY RESPONSIBILITY FOR ANY INFORMATION SUPPLIED.

G87/37 Rothschild Avenue, Rosebery



JAMI REAL ESTATE