



## 415/91 Shoreline Drive RHODES NSW

2 2 1

Located in the popular and sought after waterside suburb of Rhodes is this large, spacious open plan, two bedroom apartment boasting additional study area and good size sunroom.

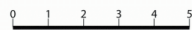
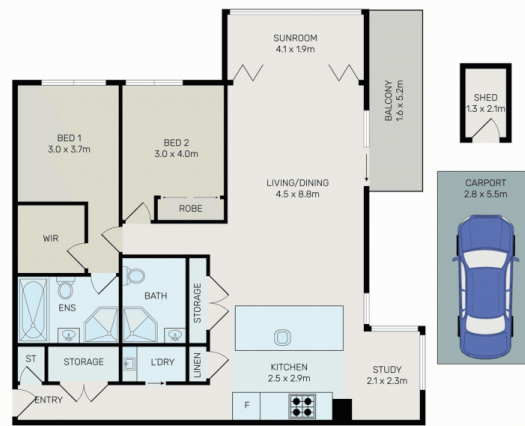
Master bedroom has ensuite and walk in wardrobe, Full second bathroom, Gourmet kitchen with Caesar stone benches, gas cooking & dishwasher, Good size balcony for the entertainer, Advantage of extra large windows and sunny aspect, Internal laundry and air conditioned bedrooms and lounge room.

Resort style living with pool, sauna & gym, Close to trains (850m), schools & shopping including Rhodes Waterside

**Type** : Apartment

**Price** : \$ 780 per week

**View** : <https://www.jami.com.au/lease/nsw/inner-west/rhodes/residential/apartment/8186561>



All information contained herein is gathered from all sources we believe to be reliable. However, we cannot guarantee its accuracy and interested parties should rely on their own enquiries.



415/91 Shoreline Drive, Rhodes